



Sustaining & Optimizing Enterprise SharePoint 2007 Systems

Kenneth Lo, PMP

June 10, 2010

SUGDC

SHAREPOINT USER GROUP
OF WASHINGTON DC



Short Bios

- Kenneth Lo
- Senior Technical Manager
- PMP, MCTS, MCSD
- SharePoint, Project Server, Social Media
- <http://klopmp.com>
- @klopmp



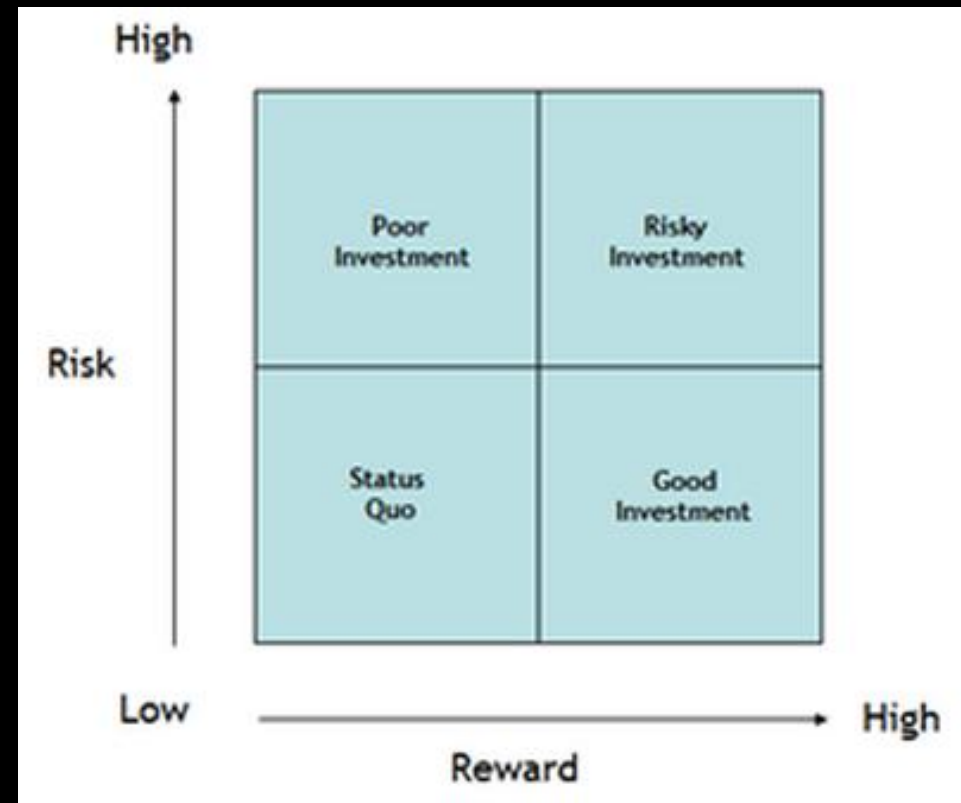
Agenda

- Why Keep SharePoint 2007
- Architecture & Topology
- Hardware & Software Configurations
- Monitoring
- Demo

Scope



- Enterprise SharePoint System
- SharePoint 2010 Rollout “Imminent”
- Action Items
 - Low Risks
 - High Rewards
 - Minimum Outage
 - Maintain or Enhance Security Posture





Agenda

- *Why Keep SharePoint 2007*
- Architecture & Topology
- Hardware & Software Configurations
- Monitoring
- Demo



Why Keep SharePoint 2007

- Resources Availability
- Security Requirements
- Training & Documentations
- Enterprise Adoption



- Sustain & Optimize Existing Infrastructure



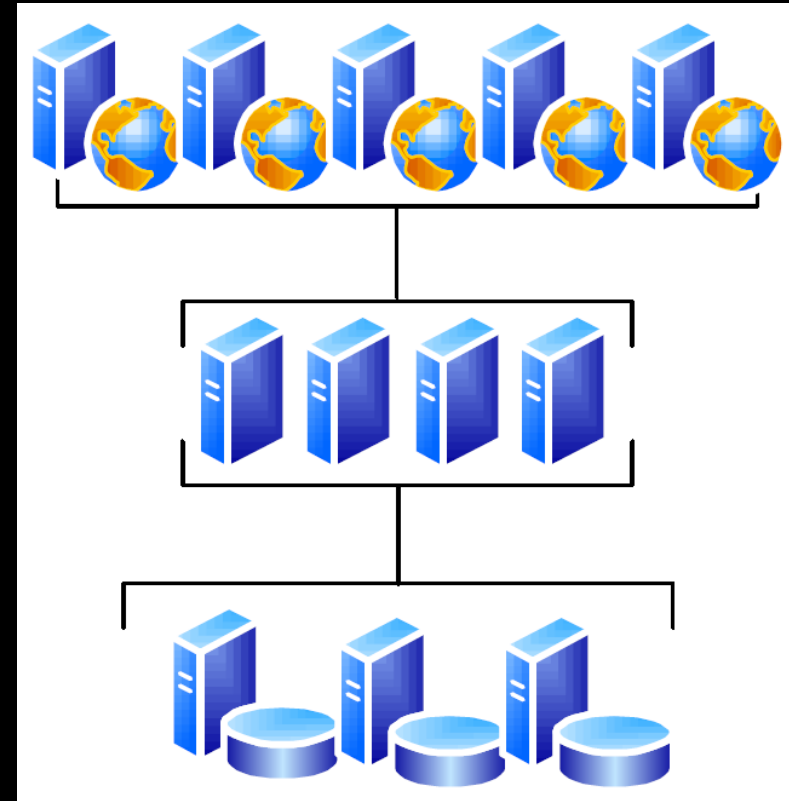
Agenda

- Why Keep SharePoint 2007
- Architecture & Topology
- Hardware & Software Configurations
- Monitoring
- Demo



Architecture & Topology

- Web Front End Servers
 - Load Balancing
- Application Servers
 - Central Admin
 - Query, Index Services
 - Profiles
 - Excel Services, Project Server
- Database Servers
 - Clustering Failover





Architecture & Topology

- Disaster Recovery
 - Remember Murphy's Law?



Agenda

- Why Keep SharePoint 2007
- Architecture & Topology
- Hardware & Software Configurations
- Monitoring
- Demo



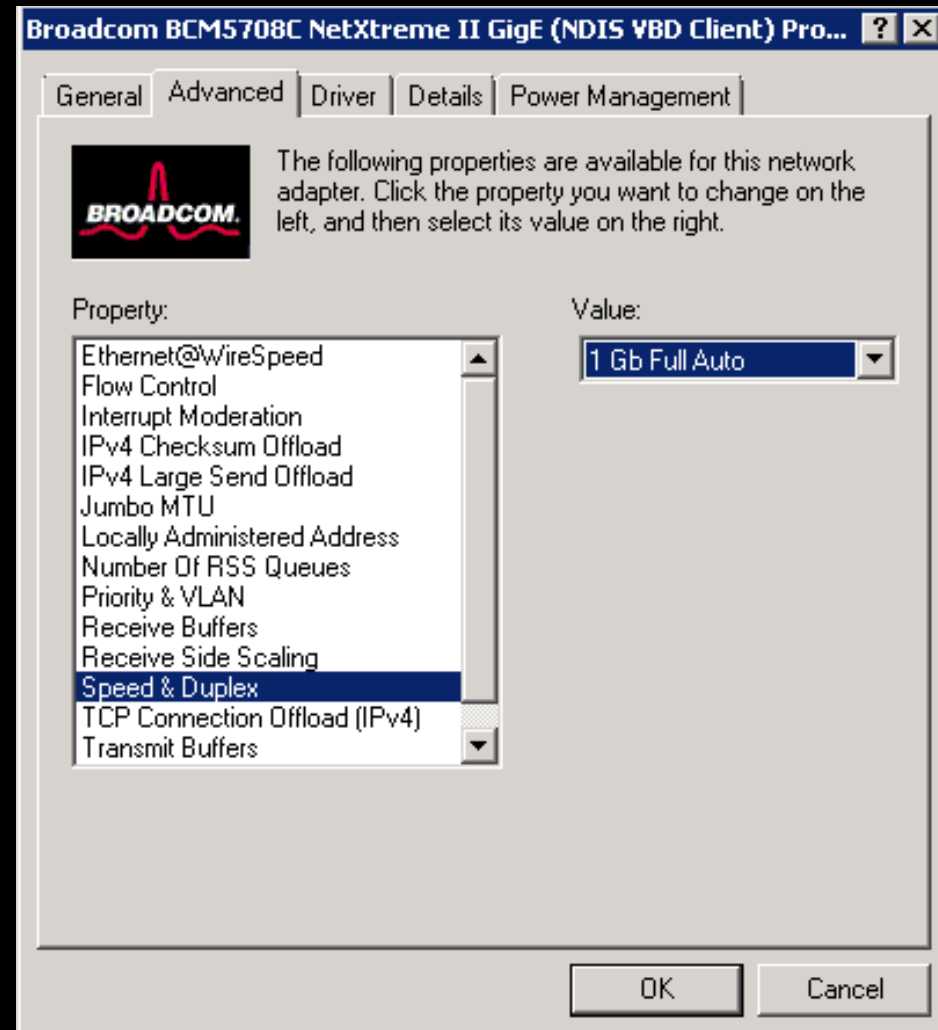
Hardware

- 64-bit vs 32-bit
- Blade vs Rack Servers
- RAM
- SANs/Disk Configurations
- Virtualization

Hardware



- Network Cards
 - Update Firmware and Drivers
 - Override Auto-Switch to 1 Gigabyte
 - Inbound & Outbound Traffic





Software - OS

- Services Packs and Patches
- Page File Memory
- Timer Jobs
 - Defrag
 - Anti-Virus Scan
 - Backup
- Kerberos Authentication



Software - SQL Server

- Clustering
- Resources Utilization
 - CPU
 - RAM
 - Hard Disk - Data vs Log Files
- Management Maintenance Plans
 - Truncate Log Files
- Reporting & Analytical Services

Software - IIS



- Disk Configurations
 - Web Site Files on Separate Drives
- Application Pool
 - # of App Pools
 - Overlapped Recycling
- IIS Compression
 - Static
 - Dynamic

Advanced Settings

Shutdown Time Limit (seconds)	90
Startup Time Limit (seconds)	90
Process Orphaning	
Enabled	False
Executable	
Executable Parameters	
Rapid-Fail Protection	
"Service Unavailable" Response Type	HttpLevel
Enabled	True
Failure Interval (minutes)	5
Maximum Failures	5
Shutdown Executable	
Shutdown Executable Parameters	
Recycling	
Disable Overlapped Recycle	False
Disable Recycling for Configuration Changes	False
Generate Recycle Event Log Entry	
Private Memory Limit (KB)	0
Regular Time Interval (minutes)	0
Request Limit	0
Specific Times	TimeSpan[] Array
Virtual Memory Limit (KB)	0

Disable Recycling for Configuration Changes
[disallowRotationOnConfigChange] If true, the application pool will not recycle when its configuration is changed.

OK Cancel



Software - SharePoint

- Site Quota
- Enable Services as Needed
- Crawling Schedule
- Profile Import
- AD vs SharePoint Security Groups



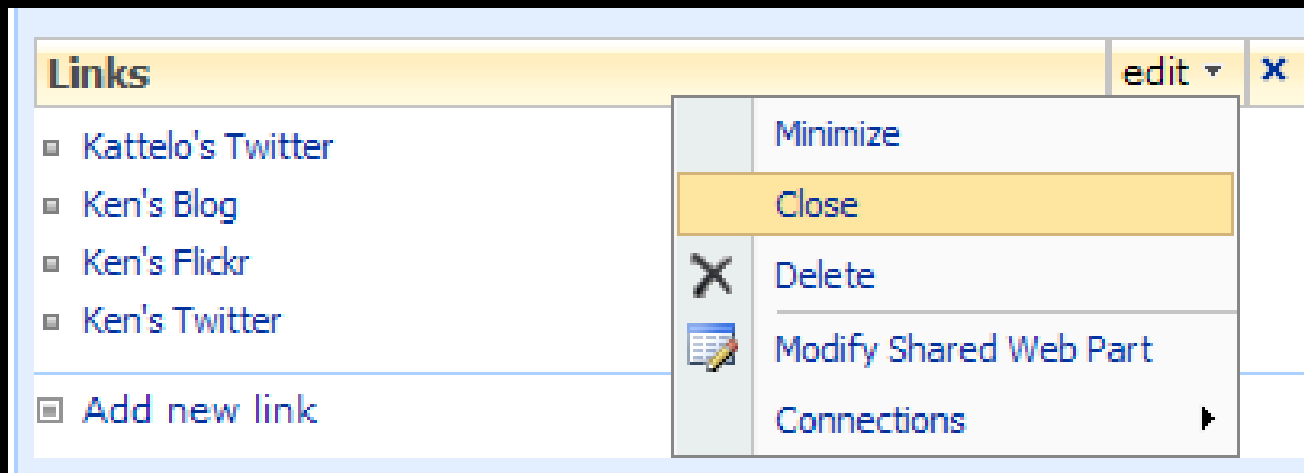
Software – SharePoint

- Disk Based Cache (aka BlogCache)
 - web.config
- Output Cache
 - Site Collection
 - Site
 - Page Layout
- Object Cache
 - Data in Cross-Listed Queries



Software – SharePoint

- Page Optimization
 - Closed vs Deleted Web Parts
 - core.js (~250KB Uncompressed)
 - core.css, init.js, ie55up.js (~250KB Uncompressed)
- Large Lists





Agenda

- Why Keep SharePoint 2007
- Architecture & Topology
- Hardware & Software Configurations
- Monitoring
- Best Practices
- Demo



Monitoring

- Perfmon
- SharePoint Administration Toolkit
- System Center Operations Manager (SCOM)
- BMC ProactiveNet
- AvePoint DocAve
- Axceler ControlPoint
- Quest Site Administrator



Monitoring - SPDiag

- SharePoint Diagnostics (SPDiag)
 - Read-Only
 - IIS, ULS, Event Logs
 - Performance Counter
 - Seven (7) Consecutive Days
 - Resource Intensive



Agenda

- Why Keep SharePoint 2007
- Architecture & Topology
- Hardware & Software Configurations
- Monitoring
- Demo

Demo



■ SPDiag

SPDiag - SharePoint Diagnostics

File Data Tools Help

Snapshot Trends

Services	Status
Windows SharePoint Services Administration	Online
Windows SharePoint Services Web Application	Online
Windows SharePoint Services Timer	Online
Windows SharePoint Services Incoming E-Mail	Online
Windows SharePoint Services Database	Online
Excel Calculation Services	Disabled
Office SharePoint Usage Analytics Service	Disabled
Business Data Catalog	Disabled
Shared Services Timer	Online
Session State	Disabled
Document Conversions Launcher Service	Disabled
Document Conversions Load Balancer Service	Disabled
Office SharePoint Server Search Admin Web Service	Online
Office SharePoint Server Search	Disabled
Single Sign-on Service	Online
Windows SharePoint Services Help Search	Online
Windows SharePoint Services Search	Disabled
Information Management Policy Configuration Service	Online
SSP Job Control Service	Online
Central Administration	Online
Portal Service	Online
Office SharePoint Server Search	Online



Resources

- Kenneth Lo's Bookmarks
 - <http://delicious.com/kennethlo/optimization+sugdc>
- Joel Oleson on **SharePoint Performance Optimization In 10 Steps**
 - <http://www.slideshare.net/joeloleson/sharepoint-performance-optimization-in-10-steps-for-the-it-professional>
- **Planning & Architecture for SharePoint 2007**
 - <http://go.microsoft.com/fwlink/?LinkID=85548>
- **SharePoint Administration Toolkit**
 - [http://technet.microsoft.com/en-us/library/cc508851\(office.12\).aspx](http://technet.microsoft.com/en-us/library/cc508851(office.12).aspx)
- **SharePoint Caching**
 - <http://technet.microsoft.com/en-us/library/cc770229.aspx>
- **Best Practices for Publishing Portals**
 - [http://technet.microsoft.com/en-us/library/cc850698\(office.12\).aspx](http://technet.microsoft.com/en-us/library/cc850698(office.12).aspx)



Resources

- Kenneth Lo's Bookmarks
 - <http://delicious.com/kennethlo/optimization+sugdc>
- Joel Oleson on **SharePoint Performance Optimization In 10 Steps**
 - <http://www.slideshare.net/joeloleson/sharepoint-performance-optimization-in-10-steps-for-the-it-professional>
- **Planning & Architecture for SharePoint 2007**
 - <http://go.microsoft.com/fwlink/?LinkID=85548>
- **SharePoint Administration Toolkit**
 - [http://technet.microsoft.com/en-us/library/cc508851\(office.12\).aspx](http://technet.microsoft.com/en-us/library/cc508851(office.12).aspx)
- **SharePoint Caching**
 - <http://technet.microsoft.com/en-us/library/cc770229.aspx>
- **Best Practices for Publishing Portals**
 - [http://technet.microsoft.com/en-us/library/cc850698\(office.12\).aspx](http://technet.microsoft.com/en-us/library/cc850698(office.12).aspx)



Contact

- <http://klopmp.com>
- <http://klopmp.com/twitter>
- <http://klopmp.com/linkedin>